



EARLY BIRD OFFER!
2019 PRICES FROZEN FOR
VENUES REGISTERED BEFORE
30TH NOVEMBER 2019

Registered Venues 2020 What Do You Get?

Each year we produce between 10,000 & 20,000 programmes to promote the Southside city wide. With nearly 10,000 followers on Facebook and ever increasing unique traffic on our website our online promotion has a reach of 15,000+.

**EARLY BIRD - If you sign up before
30th NOVEMBER 2019**

Our registration fee of **£40.00** - has been frozen since 2014.

There is a **50% discount** if your venue is a community org or a charity. In 2018 we introduced a third tier fee of **£25.00** for cafes, shops or smaller venues who would like to support the festival, but perhaps don't have the capacity to host events. These fees end on 30th November 2019.

SIGNING UP ON OR AFTER 1ST DECEMBER 2019

Fees are:

Café/Retail	£25
Community	£25
Commercial	£50

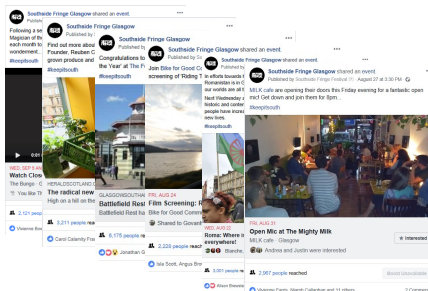
What is the Registration Fee used for? This investment covers the costs of promoting the creative and business communities of the Southside; producing the many printed programmes, our website and hosting costs and day to day running costs.

If you'd like to find out more, contact the team at

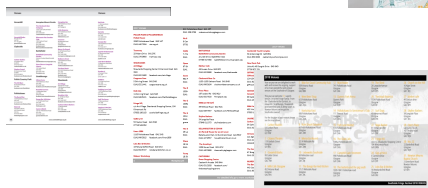
info@southsidefringe.org.uk

*A regular event is an event that is on year round that the venue has autonomy over. The festival aims to stimulate new and experimental events and these carry a registration charge.

**12 posts on
our Facebook
annually**



**Annual listing on
Southside Fringe
Website**



**Listing in the
Southside
Fringe hard
copy annual
programme**

**Maximum of 4 regular
events* listed for free
in the annual Fringe
programme
(2 per week)**



AND

Discount on adverts in printed programme
Discounts on NEW Southside Fringe advertorials

REGISTER YOUR VENUE

HERE TODAY!